



A 10 DAY SOCCER TOUR TO 2019 FIFA WOMENS WORLD CUP



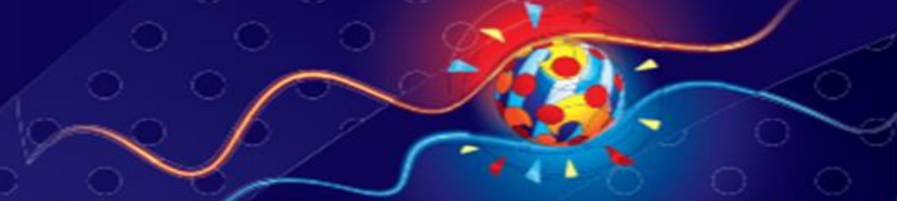
Provision of tickets to attend
two official games of the
FIFA Women's World Cup



**ATTEND TWO LIVE
WOMEN'S WORLD
CUP FIXTURES**

MATCH SCHEDULE

FIFA WOMEN'S WORLD CUP FRANCE 2019™



Group Matches

Round of 16

Quarter-Finals

Semi-Finals

3rd Place and Final

	Friday 7 June	Saturday 8 June	Sunday 9 June	Monday 10 June	Tuesday 11 June	Wednesday 12 June	Thursday 13 June	Friday 14 June	Saturday 15 June	Sunday 16 June	Monday 17 June	Tuesday 18 June	Wednesday 19 June	Thursday 20 June	Friday 21 June	Saturday 22 June	Sunday 23 June	Monday 24 June	Tuesday 25 June	Wednesday 26 June	Thursday 27 June	Friday 28 June	Saturday 29 June	Sunday 30 June Monday 1 July	Tuesday 2 July	Wednesday 3 July	Thursday 4 July Friday 5 July	Saturday 6 July	Sunday 7 July		
Valenciennes Stade du Hainaut			04 15:00 C1 v C2			11 18:00 B1 v B2			22 18:00 A1 v A2			30 21:00 D1 v D2			REST DAY		39 17:30 F1 v F2						41 15:00 E1 v E2								
Le Havre Stade Oceane		04 18:00 B1 v B2			11 15:00 C1 v C2			14 18:00 D1 v D2			20 18:00 E1 v E2			25 21:00 F1 v F2			40 21:00 A1 v A2				45 21:00 B1 v B2										
Reims Stade Auguste Delaune		02 15:00 A1 v A2			11 21:00 F1 v F2			14 21:00 E1 v E2			24 21:00 D1 v D2			33 18:00 C1 v C2				41 18:00 B1 v B2													
Paris Parc des Princes	01 21:00 A1 v A2			08 18:00 D1 v D2			14 21:00 B1 v B2			23 15:00 F1 v F2			30 21:00 E1 v E2					43 21:00 C1 v C2					46 21:00 D1 v D2								
Rennes Roazhon Park		03 21:00 B1 v B2			12 18:00 F1 v F2			20 15:00 E1 v E2			25 21:00 A1 v A2			34 21:00 D1 v D2					44 21:00 C1 v C2					48 18:30 B1 v B2							
Lyon Stade de Lyon																															
Grenoble Stade des Alpes			04 15:30 C1 v C2			14 15:00 A1 v A2			21 21:00 B1 v B2			29 21:00 D1 v D2				38 15:00 F1 v F2															
Nice Stade de Nice			03 18:00 E1 v E2			13 21:00 A1 v A2			24 18:00 F1 v F2			31 21:00 D1 v D2				37 18:30 C1 v C2															
Montpellier Stade de la Mosson				09 21:00 B1 v B2			17 18:00 C1 v C2				22 18:00 E1 v E2			34 18:00 D1 v D2						43 18:00 F1 v F2											

Group A

A1
A2
A3
A4

Group B

B1
B2
B3
B4

Group C

C1
C2
C3
C4

Group D

D1
D2
D3
D4

Group E

E1
E2
E3
E4

Group F

F1
F2
F3
F4



The kick-off times are subject to change and will be finalized after the Official Draw.



ENJOY 7 NIGHTS IN
PARIS, FRANCE

ENJOY MATCHES AT SOME OF THE BEST STADIUMS IN FRANCE





THREE FRIENDLY GAMES
AGAINST LOCAL FRENCH
OPPOSITION

OPTIONAL - STADIUM TOUR

A guided behind the scenes tour of Parc de Princes or
Stade de France





**OPTION - TRAINING
SESSIONS & PSG ACADEMY**

SIGHTSEEING
EXCURSIONS & CITY
TOURS





**AND CULTURAL
EXCURSIONS**

ACCOMMODATION – C.D.F.A.S. IN EAUBONNE

Challenger Sports hand select each of our accommodation, to ensure comfort and satisfaction for our touring groups. During your stay in Paris, you will be staying at CDFAS sports centre. CDFAS has 4 main buildings located on 7 hectares where it primarily hosts the world of sports, education and culture for training, training in sports and animation. A multisport center located 20 minutes from Paris (Gare Ermont-Eaubonne) and near Roissy Charles-de-Gaulle is use to hosting many sport teams and is perfect choice for your soccer tour.

**MULTI-SPORT CENTRE
IS THE PERFECT
VENUE FOR A
SOCCER TOUR TO
PARIS**



ACTIVITIES TO KEEP THE GROUP ENTERTAINED DURING THEIR STAY



An aerial view of an artificial soccer pitch. The pitch is green with white and yellow markings. Several players in various colored jerseys are scattered across the field. In the background, there are trees with autumn foliage, a parking lot, and a large white building. A tall flagpole stands near the building. The sky is clear and blue.

ON-SITE ARTIFICIAL SOCCER PITCHES

YOUR ITINERARY 1/2 FIFA WOMENS WORLD CUP

Please note all itineraries are subject to change

July 2019	Day 1 12 th June	Day 2 13 th June	Day 3 14 th June	Day 4 15 th June	Day 5 16 th June
Morning		Arrive at Charles de Gaulle airport Transfer to accommodation Check-in Lunch	Breakfast Self- conducted Training Session Lunch	Breakfast Optional – Training Session with PSG Lunch	Breakfast Rest and recuperation Lunch
Afternoon/ Evening	Check-in at airport Flights departs	Tour of facilities Self- conducted Training Session Evening Meal Attend FIFA World Cup Game	Use of on-site sports facilities Tour of Stade de France Sightseeing in Paris Evening Meal	Use of on-site sports facilities Game 1 VS French Opposition Evening Meal	Full afternoon sightseeing in Paris Evening Meal Attend FIFA World Cup Game

Contact Us Today to start customizing your tour at tours@challengersports.com or call us 1-800-739-9441.

YOUR ITINERARY 2/2 FIFA WOMENS WORLD CUP

Please note all itineraries are subject to change

2019	Day 6 17th June	Day 7 18th June	Day 8 19th June	Day 8 19th June	Day 10 20th June
Morning	Breakfast Use of on-site sports facilities Lunch	Breakfast Self- conducted Training Session Lunch	Breakfast Optional – Full Day at Disneyland Paris Lunch	Breakfast Use of on-site sports facilities Lunch	Arrive in the United States
Afternoon/ Evening	Game 2 VS French Opposition Evening Meal	Use of on-site sports facilities Game 3 VS French Opposition Evening Meal	Paris sightseeing and shopping Evening Meal Attend FIFA World Cup Game	Transfer to Charles de Gaulle Airport Check-in for return flight to USA Evening Meal	

Contact Us Today to start customizing your tour at tours@challengersports.com or call us 1-800-739-9441.



PACKAGE INCLUDES

- 7 nights accommodation in very nice Sport Residence (C.D.F.A.S) based on twin, triple or quad rooms
- Return ground transfers for airport, friendly fixtures, World Cup games and city centre sightseeing
- Catering on half board basis (lunch or dinner 4 course menu)
- Use of on-site soccer facilities for own self conducted training sessions two steps away from accommodation
- Provision of tickets to attend two official games of the FIFA Women's World Cup
- Minimum of 3 Friendly fixtures during the tour against French teams of same age category and level
- Sightseeing excursion in Paris
- Use of sports facilities at CDFAS Sports Residence
- Bi-lingual speaking tour Liaison Officer in permanent attendance

Optional Extra

- Lunches
 - Additional World Cup fixture
 - Additional friendly fixture
 - Training sessions with PSG Academy
 - Behind the scenes tour to Stade De France
 - Day at Disneyland Paris
-

Price starts at **\$1890** per person based on a minimum of 25 paying travellers

OUR PAST CLIENTS

Over 500 travelers travel with Challenger World Tours every year. Fresno Pacific University, Botafogo F.R., Santos Soccer School, Fluminense Soccer Schools are some of the teams that have travelled with Challenger World Tours in the past.



Middle Tennessee State University
www.goblueraiders.com



Botafogo F.R.
www.botafogo.com.br



U.S. U17 NATIONAL TEAM
www.ussoccer.com



Football Association of Malaysia
www.fam.org.my



HARROW
SCHOOL

Harrow School
<https://www.harrowschool.org.uk/>



EMORY
OXFORD
COLLEGE

Oxford College
<https://oxford.emory.edu/>



San Francisco
www.sfvikings.com



Hampton School - UK
www.hamptonschool.org.uk



Espaco Chute Certo
www.espacochutecerto.com.br



Oregon ODP
www.oregonyouthsoccer.org



KNOX
GRAMMAR
SCHOOL

Knox Grammar School
<http://www.knox.nsw.edu.au/>



Scholar Athletes Leadership Academy
<https://www.scholar-athletes.com/>



Trops FC
www.trops.com.br



KING'S COLLEGE SCHOOL
WIMBLEDON

Kings College School- UK
<https://www.kcs.org.uk/>



Fresno Pacific University
www.espacochutecerto.com.br



VITERBO
UNIVERSITY

Viterbo University
<http://www.viterbo.edu/>



Meninos da Vila Santos
<https://www.meninosdavidasantos.com.br/>

RioSport

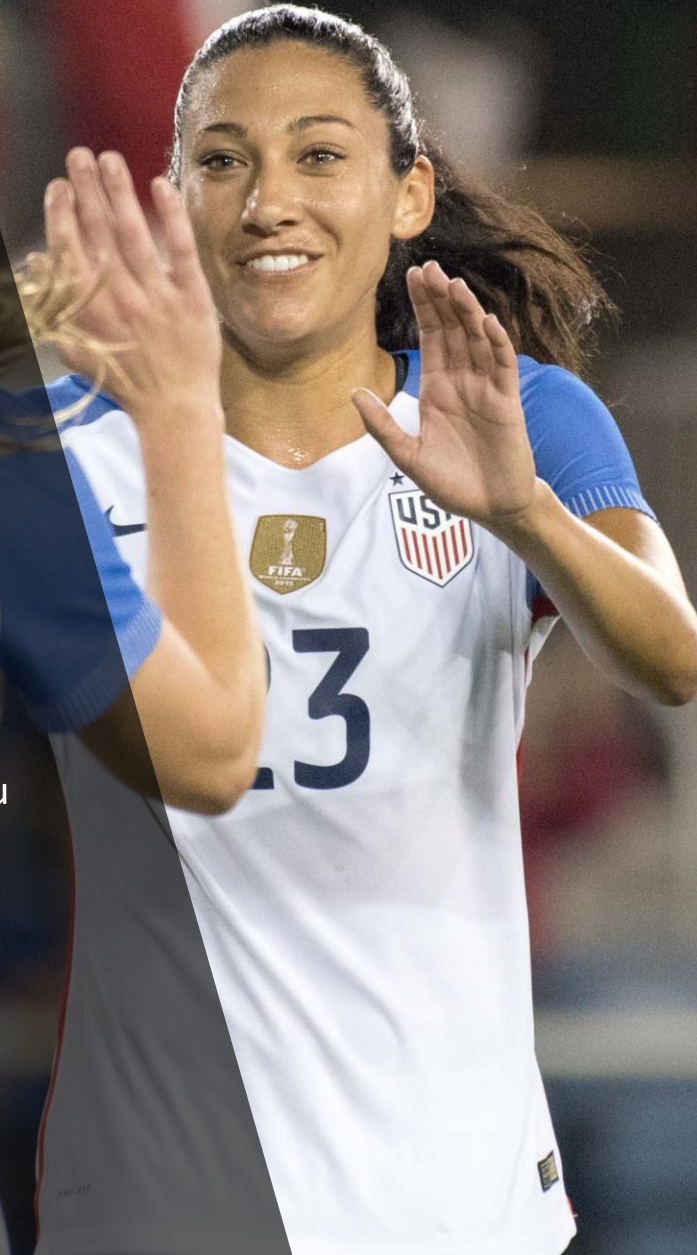
Rio Sport
<http://www.riosportcenter.com.br>



For more information
please contact
Challenger World Tours
Today!

Next Steps:

- Contact Challenger World Tours to discuss your specific tour and itinerary
- Select available dates
- Tailor a tour that suits your team and club needs
- Challenger World Tours will take care of all logistics, flights and travel arrangements for you
- Sign up players, parents & supporters
- Head to your customized trip for an experience of a lifetime!



Gareth Hughes
National Director
800-878-2167 ext. 231
ghughes@challengersports.com
www.challengerworldtours.com

